

29TH ANNUAL REPORT 2024/2025

Paeroa Community Support Trust



2.30PM
WEDNESDAY
20 AUGUST
2025

PCST CAREHOUSE
BUILDING
21 WILLOUGHBY
STREET, PAEROA

20
25

ANNUAL
REPORT



Paeroa Community Support Trust

29TH ANNUAL REPORT 2024/2025

Acknowledgements



Paeroa Neighbors



We also thank the people of Paeroa and the wider community organisations who support us in other ways, not just financially.

Many thanks to our funders and volunteers, a partnership that creates a stronger community in the Hauraki.



Paeroa Community Support Trust

PO Box 54, Paeroa 3640

admin@pc.org.nz

HRC Office Ph 07 862 6110

Carehouse Ph 07 862 9129

[f @PaeroaCommunitySupportTrust](https://www.facebook.com/PaeroaCommunitySupportTrust)

[@carehouse.paeroa](https://www.instagram.com/carehouse.paeroa)

CONTENTS

04	Introduction Staff & Trustees
05	Value Statement Our Locations
06	Organisational Structure
07-08	Minutes of the 28th AGM
09-10	Chairperson's Report
11	Treasurers Report
12	Statement of Financial Performance
13	Statement of Financial Position
14	Statement of Cashflow
15-19	Notes to the Performance Report
20	PCST 2025-2026 Strategic Plan
21-22	General Managers Report
23-24	Children's Day/Hauraki Resource Centre
25	Community Programs OSCAR
26	Kids Can Cook
27	Financial Mentoring
28	Whanau Support
29	Thames Valley Alternative Learning
30	Strengthening Families/Supervised Contact
31	Toy Library
32	Toy Library Financials
33	Keen Team/Volunteer Drivers
34	Volunteer Drivers Financials
35	Community Bus
36	Paeroa Neighbours Foodbank/Financials
37	Children's Day Photos
38	How to donate

**Paeroa Community
Support Trust**



**Registered Charity
Number: CC21223**

Introduction

The Paeroa Community Support Trust was founded in 1996:-

VISION

"To be a regional holistic support resource serving our Hauraki Community'

The Paeroa Community Support Trust aims to:-

- A.** Provide human and material resources and support generally for the community of Paeroa and beyond;
- B.** Meet the needs, enrich the life and encourage service to the community of Paeroa in a manner reflecting and consistent with the teachings of Jesus Christ;
- C.** Carry out these desires in a way that honours the Treaty of Waitangi.

The Trust provides programmes, events, activities, training and opportunities for children, youth, families and seniors, including new initiatives each year, all of which result in significant social input and impact for the area.

Staff



Vicki Martin	Community Programs Coordinator/TVAl Assistant	Carol Costello	General Manager
	Tutor	Debbie Levien	Office Manager
Hemi Keelan	Community Programs Coordinator/TVAl Assistant	Margaretta Slaney	Financial Mentor Team Leader
	Tutor	Sarah Beisly	Financial Mentor/Whanau Support Coordinator
Maggie Downes	Community Programs	Annie McKegg	Financial Mentor
Sophia Boros	Community Programs	Karen Workman	Financial Mentor
Amelia Parish	Community Programs	Kieran McShane	Whanau Support Coordinator
Miyah Henley	Community Programs	Holly Chamberlain	HRC Office & Church Administrator
Paula Johnson	Community Programs		Kids Can Cook Coordinator
Winsome Ansty	Community Programs	Kylie Harris	Kids Can Cook Assistant
Joey Chung	Community Programs	Dellany Simpson	HRC Office Administrator
Maria Dent	Community Programs	Joanne Kelly	Funding Manager
Kath Workman	TVAl Lead Tutor		
Rita Williams	Cleaner		
Naomi Fitzhenry	Supervised Contact Coordinator		

Trustees

Walter Tye	Chairperson	Barry Williams	Trustee
Maureen Jackson	Managing Trustee	Bryce Miller	Trustee
Deb Berry	Minute Secretary	Ihaka Ratahi	Trustee

Values Statement

PHILOSOPHICAL BASE

The Paeroa Community Support Trust Aims to:

WORK with INTEGRITY

Treat everyone with RESPECT

Offer HOPE and practical CARING

Provide avenues of CARING

BUILD a community of TRUST

Be a SUCCESS and enable others to SUCCEED

The Paeroa Community Support Trust is based on a Christian Ethos:-

- A. The Trust** works to ensure that a Christian Ethos is maintained;
- B. The Trust** aims to build supportive and caring relationships with staff, volunteers and other persons involved in and relating to the Trust;
- C. The Trust** maintains and nurtures a living relationship with the Paeroa Co-operating Parish and its members;
- D. The Trust** ensures all requirements related to government regulations and funding/grants are met.

Our Locations

The Paeroa Community Support Trust operates from two Centres:-

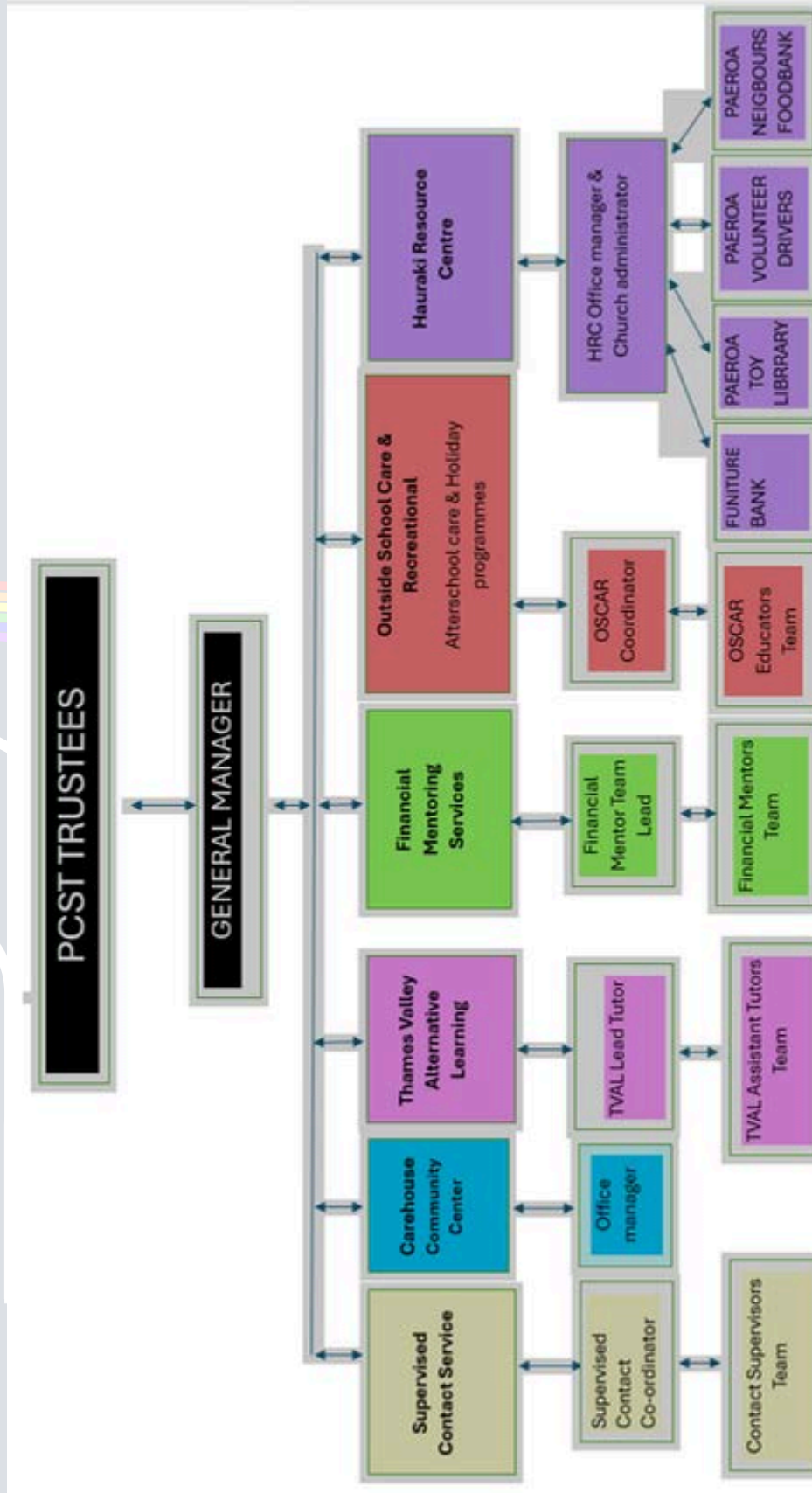
A. The Hauraki Resource Centre - to provide a hub where Trust activities are co-ordinated, all visitors and clients are welcomed and informed, connections are provided to a variety of organisations, and opportunities to serve the community are enabled. Based in the Paeroa Co-operating Parish, the Hauraki Resource Centre hosts a number of Paeroa Community Support Trust activities;



B. The Carehouse - to provide a caring and safe place for children and youth with a wide range of fun activities and positive mentoring, including our, after school and holiday programs. TVAL and Financial Mentoring.



Organisational Structure



Minutes of the 28th AGM

HELD ON WEDNESDAY 26 JUNE 2024

PCST CAREHOUSE BUILDING, 21 WILLOUGHBY ST, PAEROA

Present	Walter Tye, Maureen Jackson, Barry Williams, Bryce Miller
In Attendance	Carol Costello (Staff), Sarah Beisly (Staff), Debbie Levien(Staff), Holly Chamberlain(Staff), Kath Workman(Staff), Val Sparks, Lud Sparks, Toby Adams (HDC Mayor), Bill Tissingh, Ann Te Whau (Paeroa Toy Library), Winsome Ansty, Ihaka Ratahi, Lee Jarvis, Gary Jarvis, Brett Otto, Margaret Harrison (WINZ), Vicki Martin(Staff), Aimee Dunn
Apologies	Debs Berry (Trustee), Lyn Williams, Rino Wilkinson (HDC), Raewyn Kirkman (DV Bryant Trust), Viv Maurice, Linda Gee (DIA), Sarah Gibb (Community Waikato), Sarah (Te Aroha Budgeting, Paul Milner (HDC), Kim Modik (Oranga Tamariki), Barb Berry, Sharon Hamilton (Paeroa Neighbours), Chris Webb, Janet Tye, Julia Lowe, Margarete Ford Moved 'that the apologies be sustained' Barry / Bill Agreed
Conflict of Interest	None recorded
Minutes from the Last AGM Meeting, Wednesday 12th July 2023	Move 'that the Minutes from the PCST AGM held on 12 th July 2023 are a true and correct record' Maureen / Bill Agreed
Matters Arising	
Correspondence – In/Out	1. Auditor letter (Michael Burt) Move 'that the correspondence be received' Maureen / Debbie Agreed
Chairperson Report	Chairperson Report – Walter Tye Moved 'that the Chairperson report be received' Walter / Brett Agreed
Financial Report	Moved 'that the Financial report be received' Barry / Bryce Agreed <ul style="list-style-type: none"> - HDC loan was a 10-year loan, with 6 years remaining (\$12000 offset each year by an HDC grant) - Bill asked why the increase in income from 'Cash receipts from other operating activities. To be clarified.
Other Reports	General Manager Report (Carol) <ul style="list-style-type: none"> Highlighted the needs in our community Thanked all our volunteers, and past staff Recognised and thanked our current staff Whanau Support (Sarah) Paeroa Financial Mentoring (Sarah) TVAL (Kath) <ul style="list-style-type: none"> 'Good news' story – a 15year old TVAL student who continues formal education after hours so she can work elsewhere, now working as casual employee in our OSCAR and HRC programs Community Programs

Minutes of the 28th AGM

HELD ON WEDNESDAY 26 JUNE 2024

PCST CAREHOUSE BUILDING, 21 WILLOUGHBY ST, PAEROA

	<p>Disco Action</p> <p>Strengthening Families</p> <p>Hauraki Resource Centre</p> <p style="padding-left: 40px;">New website developed by Holly has just been released</p> <p>Supervised Contact</p> <p>Children's Day</p> <p>Music n Movement</p> <p>Keen Team</p> <p><u>Other programs:</u></p> <p>Meals on Wheels – final report, now disbanded</p> <p>Paeroa Neighbours Foodbank</p> <p>Paeroa Toy Library (Ann, Winsome)</p> <p style="padding-left: 40px;">In the process of applying for funding. Continuing turnover of families</p> <p>Paeroa Community Bus (Val)</p> <p>Paeroa Volunteer Drivers (Val)</p> <p>Paeroa Furniture Bank</p> <p>Moved 'that the reports be received'</p> <p>Holly / Lee Agreed</p>
Trustees	<p>Move 'that Walter Tye, Barry Williams, Maureen Jackson Deb Berry, Bryce Miller continue '</p> <p>Bill / Brett Agreed</p>
General Business	<p>1. Bill asked if PCST collected attendance stats for each program to identify trends and evaluate success. Would be informative to include some of these in the Annual Report</p>
Next Meeting Date 2025	<p>Bryce closed the meeting in prayer</p>



CHAIRPERSONS REPORT

- WRITTEN BY WALTER TYE

In presenting the 29th PCST Chairmans report I welcome our Trustees, Staff, and representatives of groups under our umbrella. This is a change. When renewing our 'Not for Profit' deed it became clear that as the Paeroa Community Support Trust does not have members we are only required to report to our Trustees. This is that formal part.

It is important for our business that all Team leaders summarise the years performance, assess the good and the not so good, and reset goals for the new year. The trustees do wish to formally engage the community we serve in a more interactive meeting to ascertain how we are performing, and what new initiatives are wanted. So, we now have an annual reporting process of two parts. Our team Leaders will be an important part of this engagement.

Voluntary governance reflects a commitment of personal values in action. I wish to say a heartfelt thankyou to my fellow Trustees. Maureen as our Managing Trustee and Secretary is forever efficient and decisive. Bryce is now well versed in PCST governance. Ihaka Ratahi joined us in July and brings a working knowledge of our communities' health and related networks. Debs has leave of absence. Barry signalled his retirement last year but continued to support us from Morrinsville until his official resignation was received. Thank you immensely Barry for your grounded and compassionate contributions. Hence a core of four trustees has guided this organisation through the 24/25 year.

Thank you to our General Manager, Carol, who has contributed actively to our meeting deliberations. Trustees are pleased and relieved that you have shouldered much of the daily operational decisions and ongoing compliance demands. It is astounding how much time is absorbed in keeping on track.

Carol is now also leading the fund-raising effort with help from other staff. New programs take considerable time to shape, source funding, employ staff and deliver. Please read the reports. The details will bring what we do alive for you.

To our committed staff and volunteers, we thank you for the heart in your deliveries. 'Enabling People' is your focus. Your many daily interactions require patience and purpose. You have weathered the ups and downs of our business this past year and help shape the way we engage. We value your suggestions of change for the better and are keen to hear your reports. During this year we farewelled Sarah Beisley who joined us early in 2022 as a Financial Mentor trainee, became the Financial Mentor Team Lead in early 2024, and also spear-headed a short term 'Whanau Support' contract for our local schools. We wish her well for her future endeavours.

Financially we have drawn on a portion of our reserves this year. Largely due to the immediate impact of increasing costs relative to the predetermined fixed funding of our programs and overheads. We have revised all our forecast budgets and are applying for increases in grants for Operational funding in particular. Efficiency of time use is the most important focus. We exist to enable and assist our community to meet the challenges each day and that requires face to face engagement Thank you.

Our Contracted services are our strength. Budgeting, Alternative Education and Supervised Contact with the Justice service. It is hard to reason why, with tougher times for households,

CHAIRPERSONS REPORT - WRITTEN BY WALTER TYE

that the number of Budgeting clients decreased (although this current year has seen an increase again). I suspect it is the lag effect that provokes the need to seek help and then action. The Alternative Education program has seen great success at young folk getting back to college or starting paid work and achieving many life skills e.g. car licences. The Supervised Contact service is under review and may change substantially in the short to medium term. Kids can Cook is booming along.

The Afterschool program for children with working parents has financially improved after a lot of effort.

Our umbrella groups - Paeroa Volunteer Drivers, Paeroa Toy Library and Paeroa Neighbours Food bank - deserve praise and gratitude for the impact they have on our citizens. The review of the Not-for-Profit legislation has resulted in a few changes in the way we work together. The Paeroa Community Bus voluntary group is now operating independently; we wish them well.

Community led activities that take place in our space, but operate independently, come and go. These grow from the bottom up and often resist formality. We are pleased our community feels comfortable in our space. Opportunity to be engaged in the evenings in a positive activity result in less idle time and trouble for the town.

Already we are well into the 25/26 year with new changes completed and new proposals to find funding and staff to progress. The 2024/25 year saw success in retaining contracts as well as improvement to our operating systems.

Thank you for to all of you who have helped us achieve this result.



TREASURERS REPORT

- WRITTEN BY MAUREEN JACKSON

This financial year the responsibility for our financial wellbeing has again been a joint effort from all trustees.

The financial statement shows a net loss of \$25,231.00 on total revenue of \$633,301.00 with total expenses of \$658,532.00. As at 31/03/25 we had \$60,017 of funds received in advance for tagged purposes from the closing bank account balance of \$203,901.

During this financial year, the following points should be noted

1. Our biggest expense (at 76% of Total Expenses) is our investment in our staff and volunteers.
This is to be expected as a provider of services to our community. Our staff and volunteers are our most valuable assets!
2. The cash flow loss was \$ 46,879, resulting in a reduction of our reserves. This reflects the difficulty of acquiring funding in the current environment, and that the Trust relies on grants, donations, and contracts for the source of all their funding.
3. Trustees are focusing on improvements to our budgeting, with the assistance from managers of budgets ensuring all expenses are within the allocated boundaries. This is a real learning area for our trustees and our staff.

A particular thankyou to all our staff who have assisted with funding applications, ensuring that Paeroa Community Support Trust is able to continue to operate quality programs and resources.

We are indebted to our Administration Manager, Debbie Levien, who magnificently manages all our operational financial processes.

Special thanks go to all our funders; without your support the Trust would not exist, with particular note of the Hauraki District Council who have invested in a long-term relationship with the Trust through provision of a loan being repaid over a ten-year period (we are now half way through that period). Thanks also to Michael Burt who undertook to review our accounts last year.



Paeroa Community Support Trust

STATEMENT OF FINANCIAL PERFORMANCE FOR THE YEAR ENDED 31ST MARCH 2024

	NOTES	2025	2024
Revenue			
Donations, fundraising and other similar revenue	1	129,990	146,539
Fees, subscriptions and other revenue from members	1	26,440	28,504
Revenue from providing goods or services	1	445,707	446,413
Interest, dividends and other investment revenue	1	4,002	5,743
Other revenue	1	27,161	39,990
Total Revenue		633,301	667,189
Expenses			
Volunteer and employee related costs	2	498,412	499,381
Costs related to providing goods or service	2	150,135	151,305
Grants and donations made	2	50	-
Other expenses	2	9,936	13,041
Total Expenses		658,532	663,727
Surplus/(Deficit) for the Year		(25,231)	3,463
Total Surplus/(Deficit) for the Year		(25,231)	3,463



Paeroa Community Support Trust

STATEMENT OF FINANCIAL POSITION FOR THE YEAR ENDED 31ST MARCH 2024

	NOTES	31 MAR 2025	31 MAR 2024
Assets			
Current Assets			
GST		-	1,432
Bank accounts and cash	3	203,901	250,779
Debtors and Prepayments			
Trade Receivables		10,491	1,883
Total Debtors and Prepayments		10,491	1,883
Total Current Assets		214,392	254,094
Non-Current Assets			
Property, Plant and Equipment	4	636,283	619,953
Total Non-Current Assets		636,283	619,953
Total Assets		850,675	874,047
Liabilities			
Current Liabilities			
Creditors and Accrued Expenses	5	10,929	13,793
Employee Costs Payable	5	22,154	19,761
Other Current Liabilities	5	82,146	61,128
Total Current Liabilities		115,229	94,682
Non-Current Liabilities			
Loans	5	53,312	72,000
Total Non-Current Liabilities		53,312	72,000
Total Liabilities		168,541	166,682
Total Assets less Total Liabilities (Net Assets)		682,134	707,364
Accumulated Funds			
Accumulated Surpluses or (Deficits)			
Retained Earnings/Accumulated Funds		707,364	703,902
Current Year Earnings		(25,231)	3,463
Total Accumulated Surpluses or (Deficits)		682,134	707,364
Total Accumulated Funds		682,134	707,364

Paeroa Community Support Trust

STATEMENT OF CASH FLOW FOR THE YEAR ENDED 31ST MARCH 2024

	2025	2024
Cash Flows from Operating Activities		
Donations, fundraising and other similar receipts	123,140	146,552
Fees, subscriptions and other receipts from members	30,329	32,444
Receipts from providing goods or services	406,011	398,933
Interest, dividends and other investment receipts	4,002	5,743
Cash receipts from other operating activities	102,934	120,124
GST	(25,966)	(26,521)
Payments to suppliers and employees	(673,112)	(647,370)
Donations or grants paid	(50)	-
Total Cash Flows from Operating Activities	(32,710)	29,906
Cash Flows from Investing and Financing Activities		
Receipts from sale of property, plant and equipment	-	5,242
Capital contributed from owners or members	15,000	-
Payments to acquire property, plant and equipment	(33,122)	(9,846)
Capital repaid to owners or members		
Contra	(15,000)	-
Cash flows from other investing and financing activities	18,954	(29,317)
Total Cash Flows from Investing and Financing Activities	(14,168)	(33,920)
Net Increase/(Decrease) in Cash	(46,879)	(4,014)
Bank Accounts and Cash		
Opening cash	250,779	254,794
Net change in cash for period	(46,879)	(4,014)
Closing cash	203,901	250,779



Paeroa Community Support Trust

NOTES TO THE PERFORMANCE REPORT FOR THE YEAR ENDED 31ST MARCH 2024

	2025	2024
1. Analysis of Revenue		
Donations, fundraising and other similar revenue		
Donations - Akarana Trust	-	4,510
Donations - COGS	10,417	15,000
Donations - DV Bryant	6,000	5,000
Donations - Hauraki District Council	850	-
Donations - Meals on Wheels (Admin/Accounting)	-	240
Donations - NZ Lotteries Grant	45,000	45,000
Donations - Paeroa Co-Op Church	3,600	3,600
Donations - Paeroa Lions	200	200
Donations - Sundry	1,454	17,689
Donations - Tindall Foundation	500	-
Donations - Trust Waikato	55,000	55,000
Donations - Valder Trust	6,000	-
Donations - Volunteer Drivers (Admin/Accounting)	970	300
Total Donations, fundraising and other similar revenue	129,990	146,539
Fees, subscriptions and other revenue from members		
Fees Received - Programs	26,440	28,504
Total Fees, subscriptions and other revenue from members	26,440	28,504
Revenue from providing goods or services		
Admin/Accounting - Paeroa Neighbors	4,174	3,813
Contract - ACC Volunteer Drivers	201	1,304
Contract - Ohinemuri Cluster	43,480	19,835
Contracts - MSD	129,046	93,199
Contracts - Paeroa College	149,120	126,178
Fees, subscriptions and other revenue from members	2,818	-
Grant - MSD	18,676	33,360
Grant - Waikato Regional Council	687	23,522
Grants - NZ Lotteries	-	80,000
PCST Van Hire	9,039	1,358
Rent Received - Lynch & Partners	1,044	1,044
Rent Received - Meals on Wheels	-	400
Rent Received - Other	4,418	2,950
Rent Received - Toy Library	-	760
Revenue from providing goods or Services - Sundry	-	510

Paeroa Community Support Trust

NOTES TO THE PERFORMANCE REPORT FOR THE YEAR ENDED 31ST MARCH 2024

	2025	2024
Supervised Contact Income	83,005	58,180
Total Revenue from providing goods or services	445,707	446,413
Interest, dividends and other investment revenue		
Interest Income	4,002	5,743
Total Interest, dividends and other investment revenue	4,002	5,743
Other revenue		
Contract - Oranga Tamariki	2,226	2,226
COVID Wage Subsidy	-	959
Expenses Reimbursed	(31)	-
Loan Abatement - Hauraki District Council	12,000	12,000
WINZ Subsidy Received	12,966	24,806
Total Other revenue	27,161	39,990
	2025	2024

2. Analysis of Expenses

Volunteer and employee related costs

ACC Levies - Staff	2,179	2,252
Honorarium	12,274	13,502
Staff Expenses & Goods	5,716	3,137
Staff Training	5,882	4,471
Volunteer Payments	1,275	1,185
Wages & Salaries	471,085	474,834
Total Volunteer and employee related costs	498,412	499,381

Costs related to providing goods or services

Advertising	1,170	2,484
Alarm Monitoring	560	-
Art & Activities Expenses	238	505
Bad Debts Written Off	1,361	-
Cleaning	2,413	2,249
Computers - Accessories	37	720
Computers - Programs/Software	2,003	1,665
Contractors - Other	21,508	25,117
Contractors - Supervised Contact	14,015	4,681
Depreciation	16,791	18,024
Electricity - Business	5,339	4,380
Food Expenses	5,969	5,466
Insurance	12,521	1,615

Paeroa Community Support Trust

NOTES TO THE PERFORMANCE REPORT FOR THE YEAR ENDED 31ST MARCH 2024

	2025	2024
Loss on Sales of Assets	-	285
Low Value Assets	356	2,260
Motor Vehicle - Fuel & Oil	2,045	4,191
Motor Vehicle - Insurance	888	929
Motor Vehicle - R & M	2,470	2,886
Motor Vehicle - Van Hire	7,028	-
Plant Lease - Photocopier	3,180	2,790
Postage	126	-
Printing & Stationery	3,107	3,379
Program Expense - Curriculum	4,266	-
Program Expenses - Excursion Food	2,354	1,635
Program Expenses - Other	6,221	15,872
Program Expenses - Transport	2,369	217
Program Expenses - Trips	2,085	4,512
R & M - Building Fire Safety	945	1,119
R & M - Buildings	4,094	17,886
R & M - Buildings Fixtures & Fittings	688	4,944
R & M - Plant & Equipment	2,759	361
Rates - Hauraki District Council	6,786	7,612
Rates - Waikato Regional Council	835	803
Rates - Water	1,198	157
Rent Paid - Paeroa Co-Op Parish	3,165	3,885
Subscriptions	3,304	3,250
Telephone & Internet	4,653	5,041
Uniforms	1,287	383
Total Costs related to providing goods or services	150,135	151,305
Grants and donations made		
Donations	50	-
Total Grants and donations made	50	-
Other expenses		
Accounting Fees	5,771	10,058
Audit Fees	2,700	2,522
Bank Fees	274	324
General Expenses	55	137
Interest - Expense	597	-
Loan Fees	539	-
Total Other expenses	9,936	13,041

Paeroa Community Support Trust

NOTES TO THE PERFORMANCE REPORT FOR THE YEAR ENDED 31ST MARCH 2024

	2025	2024
3. Analysis of Assets		
Bank accounts and cash		
Westpac - Bonus Saver - 01	7,540	-
Westpac - PCST - 00	24,050	40,034
Pettycash Account	6	51
Westpac Bonus Saver - 25	134,942	130,188
Westpac - TVAL - 03	35,863	79,445
Westpac - TVAL - Debit Card - 99	1,501	1,061
Total Bank accounts and cash	203,901	250,779
Debtors and prepayments		
Accounts Receivable	10,491	733
Debtors - Accountant	-	1,150
Total Debtors and prepayments	10,491	1,883
	2025	2024
4. Property, Plant and Equipment		
Other Fixed Assets		
Owned fixed assets	758,295	725,173
Accumulated depreciation - fixed assets owned	(122,012)	(105,220)
Total Other Fixed Assets	636,283	619,953
Total Property, Plant and Equipment	636,283	619,953
	2025	2024
5. Analysis of Liabilities		
Current Liabilities		
Creditors and accrued expenses		
Accounts Payable	1,918	4,514
PAYE Payable	9,011	9,279
Total Creditors and accrued expenses	10,929	13,793
Employee costs payable		
Provision for Holiday Pay	22,154	19,701
Wages Deductions Payable	-	60
Total Employee costs payable	22,154	19,761
Other current liabilities		
GST	2,958	(1,432)

Paeroa Community Support Trust

NOTES TO THE PERFORMANCE REPORT FOR THE YEAR ENDED 31ST MARCH 2024

	2025	2024
Current Portion - Loan Hauraki District Council	12,000	-
Current Portion - Loan UDC	7,171	-
Income Received in Advance	60,017	61,128
Total Other current liabilities	82,146	59,696
Total Current Liabilities	115,229	93,250
Non Current Liabilities		
Loan - Hauraki District Council	60,000	72,000
Current Portion - Hauraki District Council Loan	(12,000)	-
Loan - UDC Finance - New Van	13,875	-
Interest on HP	(1,392)	-
Current Portion - UDC Loan	(7,171)	-
Total Non Current Liabilities	53,312	72,000



Strategic Plan 2025 - 2026

The Paeroa Community Support Trust (PCST) oversees a wide variety of services that reflect the PCST's mission statement to provide activities, resources and support to children, youth, families, and seniors in our community. The staff, trustees, and volunteers work together to make a positive impact in our community.

Observations within our community indicate significant social issues including

- A high level of youth crime rates, with younger children often involved
- A critical lack of affordable and quality housing, and increasing numbers of vulnerable homeless
- Increased levels of aggressive behaviours in public areas
- Increased levels of anxiety in our community, and particularly in our rangitahi/young people.

Strategic Pan 2024

Adopt our revised Vision:

'To be a regional holistic support resource serving our Hauraki Community'

Next 12 months:

1. Review the organisation structure to better reflect our needs, skills, and efficiencies.
 - a. continually reviewing the structure of the governance board, trustee roles and responsibilities. In addition, governance 'subgroups' will be identified to support critical organisational processes e.g. funding and finances, assets, Policies, Marketing/Promotion, HR.
 - b. de-establish the 'Managing Trustee' role by 01.07.25 by increasing the inclusion of the General Manager in governance processes
 - c. evaluates existing trustee skills, identify gaps, and take intentional steps to fill critical gaps
 - d. ensure we are fulfilling our responsibilities under the Treaty of Waitangi as trustees and within our programs.
2. Ensure our financial sustainability under our current model of short-term funding through grants and government contracts.
3. Review our People and Culture Framework, ensuring Governance provides the role model for staff and volunteers.
4. Identify and execute Promotion strategies, which will include the creation of a 'Brand identity' to be adopted across all our programs and 'umbrella' organisations.

PTO

GENERAL MANAGER'S REPORT - WRITTEN BY CAROL COSTELLO

PCST operates across two key sites—the Hauraki Resource Centre (HRC) and the Carehouse—both of which provide a welcoming and supportive space for walk-in community members. Through these entry points, we have gained firsthand understanding of the complex challenges facing individuals and whānau, including risk of homelessness, rough sleeping, food insecurity, poor mental health, social isolation, lack of transport, and health-related difficulties.

Our dedicated teams have provided essential support, including access to community services, information and resources, referral pathways, transportation, social connection initiatives for diverse groups, and tailored support for families and seniors. Over the year, these efforts have resulted in over *17,000 recorded community connections*.

We warmly thank the staff at the Hauraki Resource Centre and Carehouse for their unwavering support and extend the same gratitude to all PCST team members. Your unwavering commitment to helping our communities thrive, each in their own unique context is deeply valued.

Our Paeroa Budgeting (Free) Service continues to empower individuals and whānau experiencing financial hardship. Beyond budgeting support, the service offers advocacy through our Strengthening Families contract which has helped clients alleviate stresses in their lives with real practical solutions. Over the past year, we proudly supported and engaged with over 750 whānau contacts—a reflection of both the growing need and our team's commitment to positive outcomes.

PCST Thames Valley Alternative Learning (TVAL) provides vital support for rangatahi who experience challenges within mainstream education. The program fosters development across social, emotional, and academic domains, enabling ākonga-students to build essential life skills in a customised supportive environment. Through the dedication of our skilled teacher and tutors, many students achieve successful reintegration into school, or transition into further training, apprenticeships, or employment. TVAL continues to play a pivotal role in guiding rangatahi toward positive, sustainable futures.

A deep appreciation to the dedicated manager and the entire team at **PCST Supervised Contact** for their unwavering commitment to supporting children and families. Their professionalism, care, and vigilance have ensured that visitations take place in a safe, nurturing environment where children can maintain meaningful connections with their whānau. Their efforts make an immeasurable difference in the lives of many.

Acknowledgment & accolades to the dedicated staff of **PCST OSCAR** program, past & present. The Educators' commitment to creating a safe, inclusive, and enriching environment for Tamariki plays a crucial role in their social and emotional growth.

The Thom family shared with staff, that their five-year-old learns something new each time she attends the OSCAR program—recently returning home excited to explain how earthquakes occur and what to do during a safety drill. This reflects the meaningful impact the program has on Tamariki, helping them build both knowledge and confidence in everyday life.

The tapestry of support woven by our volunteers enriches every corner of Paeroa—be it nourishing families through the foodbank, sparking joy and learning through the Toy Library, offering companionship to seniors, or championing the next generation through events like Te Rā o Ngā Tamariki- Children's Day and PCST Children programs.

GENERAL MANAGERS REPORT

- WRITTEN BY CAROL COSTELLO

We extend our sincere appreciation to the volunteer drivers who so generously dedicate their time and energy to supporting members of our community. Their unwavering commitment to ensuring access to vital medical and hospital appointments provides not only practical assistance, but also comfort, dignity, and reassurance to those in need. Their contribution is deeply valued and reflects the very best of community spirit.

We extend our deepest gratitude to our funders for their ongoing support, without which the delivery of PCST programmes and services would not be possible. Your contributions have enabled us to meet critical community needs while strengthening our capacity for sustainable development, promoting equity, tracking progress, and translating knowledge into meaningful action. Your partnership is instrumental in helping us transform lives and build resilient pathways forward.

We extend our sincere thanks to the PCST Board members, the steadfast driving force behind the Paeroa Community Support Trust. Their commitment, generosity, and unwavering care for our communities are evident in the countless volunteer hours they contribute—not only in supporting staff and programmes, but also through their broader service across the community. Their guidance and dedication continue to strengthen PCST's foundation and impact.

Each role, though unique, threads into a shared mission: building a more connected, compassionate community. It's heartwarming to see such a vibrant spirit of service alive and well.



CHILDREN'S DAY PAEROA

- WRITTEN BY DEBORAH LEVIEN

The Willoughby Street Domain in Paeroa was filled with joy and excitement on March 16th as the Paeroa Community Support Trust hosted a free Te rā o ngā Tamariki Children's Day event that brought the town together. Thanks to an outpouring of support from both local businesses and those from further afield, children and families enjoyed a day packed with fun, food, and entertainment with approximately 400 participants.

With the generous backing of local businesses and community organizations, the event was a resounding success, offering a range of activities for young attendees. Free pizza, ice cream, drinks and ice blocks kept everyone cool, while the Lions Club's free sausage sizzle ensured no one went hungry. Many of Paeroa's beloved local groups also contributed to the event, including the Hauraki Māori Trust Board, Te Korowai Hauora o Hauraki, Paeroa Library, Paeroa Rotary, Hato Hone St Johns Thames and Major Oak all of whom set up booths or provided services to help make the day special for the children.

The day's activities were designed to keep kids of all ages entertained. The bouncy castles were a huge hit, with children bouncing for hours. Young adventurers had the opportunity to ride in mini jeeps, while others competed in friendly tug-of-war matches. Paeroa College's talented face painters added an extra element of fun, transforming children into their favourite characters and creatures.

Special guests included Richard Hornell, who served as the enthusiastic M.C. for the day, keeping the energy high and the crowd engaged throughout the festivities.

Notably, Waihi OceanaGold brought a mini digger to the event, which provided a unique and interactive experience for the children. The digger was a big hit, offering a chance for youngsters to get up close with machinery they wouldn't typically see in their everyday lives.

"We're so grateful to all the businesses, organizations, and volunteers who made this event possible," said one of the event coordinators from the Paeroa Community Support Trust. "This event truly highlights the spirit of community that makes Paeroa such a special place. We couldn't have done it without the generous support of our sponsors."

The event was not just about fun, but also about fostering a sense of togetherness and community spirit. Families came together, children made new friends, and local businesses demonstrated their ongoing commitment to supporting the Paeroa community.

A big thank you goes out to all those who volunteered their time, their support made the day run smoothly and ensured the children had an unforgettable experience.

For many, this event was a much-needed opportunity to celebrate the local community and give back to the families of Paeroa. The Paeroa Community Support Trust has promised to continue organizing events like this in the future, creating more opportunities for residents to connect and enjoy the wonderful town of Paeroa.

PCST would like to acknowledge all our supporters of Children's Day, including Paeroa Baptist Church, Paeroa Rangers Soccer Club, Indulgenz Ice Cream, Athenree Hot Springs & Holiday Park, Choice Dairy, Coin Save Paeroa, Criterion Dairy, Good Health Products Ltd, Gull Paeroa, Moore's Service Station, Four Square Paeroa, PAKnSAVE Thames, Superior Pet Food, Pizza Hut Paeroa, Sanitarium, Sapphire Springs, Scotty's Wheels & Tyres, Tui Balms, Vitaco Ltd, NES LTD, Warehouse Thames, Woolworths Paeroa, Bluelight Paeroa. Your generous contributions and unwavering support have made this celebration possible, and we are deeply grateful for your commitment to enriching the lives of children in our community. Together, we continue to create brighter futures for the next generation."

If you missed this year's event, mark your calendar for next year's Children's Day celebration—it's sure to be another memorable occasion!



HAURAKI RESOURCE CENTRE

- WRITTEN BY HOLLY CHAMBERLAIN

Nestled within the Paeroa Co-Operating Parish, the Hauraki Resource Centre stands as a steadfast pillar of community support. Positioned strategically to cater to the diverse needs of our residents, we offer a comprehensive range of essential services, from informational guidance to proficient photocopying facilities, all while seamlessly connecting individuals to vital resources. At our core, we are guided by a profound commitment to uphold the philosophical foundation and vision of the Paeroa Community Support Trust. Our mission is to empower and uplift the people of our community, offering them pathways to success while instilling hope for the future. Through our unwavering dedication, we bridge clients to various programs, services, and events, fostering a sense of unity and collective progress. In the past year alone, our dedicated team has deftly handled 4,421 inquiries, a testament to our steadfast commitment to serving and enriching our community.

COMMUNITY PROGRAMS PAEROA - WRITTEN BY DEBORAH LEVIEN

Our OSCAR After School Care and Holiday Programs continue to thrive, providing a safe, supportive, and fun-filled environment for Tamariki in our community. Held at The Carehouse Paeroa, our programs are packed with exciting games, creative activities, delicious food, and plenty of laughter. Our Holiday Program has been a highlight, with awesome trips and outings that give our Tamariki the chance to explore, learn, and have unforgettable adventures.

Whether it's after school or during the holidays, our dedicated team ensures every child feels welcome, engaged, and cared for. We're proud to offer a space where friendships grow, imaginations run wild, and memories are made every day.

A thank you goes out to both our former and current staff – your dedication and care have made a lasting impact. We truly appreciate your commitment to creating a positive and enriching environment for every child who walks through our doors.

We look forward to another year of fun, growth, and community at OSCAR!



KIDS CAN COOK

-WRITTEN BY HOLLY CHAMBERLAIN

Kids Can Cook restarted on April 30, 2024, and has been running successfully ever since. Since its relaunch, the program has been incredibly popular, consistently reaching its maximum capacity of 10 students each term. The feedback from both parents and children has been overwhelmingly positive. Many new participants join after hearing about the program through word of mouth, whether from classmates at school or parents sharing their experiences with one another.

Throughout the program, we have cooked and baked a variety of dishes, including fun and creative activities like cupcake decorating. One of our most exciting terms featured a theme called *Around the World*, where each week, we explored a new country by preparing traditional dishes, playing themed games, and participating in quizzes to learn more about different cultures.

A key part of Kids Can Cook is the shared dining experience. After preparing their meals, the children set the table and sit together to enjoy the food they have worked hard to create. This fosters teamwork, confidence, and an appreciation for cooking—while also being a lot of fun!

A huge thank you goes to our two superstar volunteers from Paeroa College, Kylie Harris and Giovanna Smith. Their dedication and support have been instrumental in making Kids Can Cook a success. We truly appreciate their hard work and enthusiasm!



PAEROA FINANCIAL MENTORING SERVICE

- WRITTEN BY MARGARETTA SLANEY

Our Team: It has been a year of change for the Financial Mentoring team. Sarah Beisly resigned in the second half of 2024, with Margaretta Slaney taking on the Financial Mentoring Team Leader role at the end of August. Annie McKegg and Karen Workman fully qualified as Financial Mentors by the end of October 2024. All three staff members have part time hours.

Our Funding: Ministry of Social Development is currently the sole funder of the Financial Mentoring team. We were awarded 1.25 FTEs for the next three years. Our measures are based on the number of FTE's directly employed and other indicators are on 1. Client interactions; the number of new clients, open case files, clients who ended service, who had no more than one interaction, clients who attend 2-3 interactions. 2. Client situation; clients with goals, the average shift in goal, goal rating by case or length. 3. Client referrals; clients referred to us by services/organisations and clients we have referred to other services/organisations.

Our community: We have experienced fluctuating of high and low demand for our financial mentoring services this year. Over half of our clients are self-referring, hearing about our service via family, friend and neighbours.

Our clients often tell us that their time with us has led to significant improvements in their mental health, their sense of empowerment, self-confidence, and financial freedom. It is an honour to journey with whanau as they realise their own strengths and financial capabilities.

Our Professional Development: Annie and Karen are now fully qualified Financial Mentors and are fully engaged in furthering their skills by regularly attending the Community of practice online sessions which include mentors nationwide. These sessions are small trainings or introductions to Services and Organisations that help us to help our clients. Margaretta completed the Money Mates facilitation training and has completed the Supervisor Training to be able to work alongside, mentor and sign off any new Financial Mentors; both are also run by FinCap.

Thanks to everyone who has made it possible for us to serve the community this year.

PAEROA WHĀNAU SUPPORT - WRITTEN BY CAROL COSTELLO

PCST Whānau Support (Engagement and School Attendance) Report

The Paeroa Community Support Trust (PCST), through its Whānau Support Programme, undertook an in-depth research project to identify key drivers of chronic school absenteeism across the Ohinemuri school district. Findings revealed a range of complex and interconnected factors, including post-COVID and weather crisis-related anxiety, strained school-whānau relationships, limited access to public transport, and the unique pressures faced by single-parent families.

Project Development

In response, PCST extended the life of the initiative. Our case management team engaged intensively with whānau and rangatahi, focusing on understanding their strengths, personal goals, and the barriers impacting school engagement. This whānau-centred approach helped tailor support and solutions to everyone's context.

Collaborative Partnerships

This initiative was delivered in collaboration with the Ohinemuri Community of Learning committee, comprising ten schools across the Hauraki district and their principals. A key component of this partnership is the regular collection and analysis of attendance data from each of the ten schools, supporting targeted interventions and continuous improvement.

Community Support and Resilience

True to our guiding principle, **Te tautoko i to tātou hapori / Supporting our community**. PCST continued to offer high-quality support services throughout the reporting period. We ensured that individuals and whānau facing hardship had a trusted place to turn for assistance with wellbeing and navigating life's challenges. This wraparound support has empowered many to make meaningful changes in their lives and reinforce their whānau identity and resilience.

Youth Development Focus.

We also deepened our commitment to nurturing Paeroa's tamariki and rangatahi through vibrant, well-organised series of measures to ensure ākongā students get to school. These initiatives aim to provide opportunities that build confidence, life skills, and a sense of belonging. With structured support and creative case management from the team, our youth have been able to explore new experiences and grow in ways that might not otherwise have been possible.



THAMES VALLEY ALTERNATIVE LEARNING

- TVAL

- WRITTEN BY KATH WORKMAN

TVAL is an unique and exciting option for students aged between 13 and 16. (School years 9, 10 and 11) The programme is a collaborative initiative between Paeroa College (Managing School), Hauraki Plains and Thames High School. TVAL is a ministry of education funded initiative. TVAL aims to provide a 'Relational Trauma' informed approach to learning, in a safe welcoming environment. This environment is particularly suited to students who may have had negative experiences in mainstream education, and this has led to truancy, and/or they have been deemed to have challenging behaviour and consequently been excluded from school. TVAL is a pathway not a destination.

The ministry of education recognises that some students do fall out under the constraints of the traditional schooling system and TVAL is designed as an option in response to this. All students should have access to an equitable education; one size doesn't always fit all.

Lead Tutor: Kath Workman

Assistant Tutor's: Vick Martin and Hemi Keelan

PCST General Manager: Carol Costello

Children: We are funded for 12 students; we have an average attendance of 10 students onsite daily with other students transitioning between TVAL and school.

Our overriding focus is on Hauora/ Wellbeing and having a place to feel safe and comfortable. "A change of environment is often all that needs to change"

Our learning looks like a structured day with a mixture of practical learning, outside NCEA learning opportunities, life skills, targeted Literacy and Numeracy and lots of discrete learning.



STRENGTHENING FAMILIES

- WRITTEN BY MARGARETTA SLANEY

Our Funding: Oranga Tamariki – Ministry for Children funds our contract for Strengthening Families. Our measures are on referring clients to the service and being the key contact between the family and other agencies.

Our community: We are part of the local management group that meet bi-Monthly to share updates in our communities and hear about any progress that has been made.

This contract is for clients using multiple services and bringing everyone together in the same place to support the client.

SUPERVISED CONTACT SERVICE

- WRITTEN BY NAOMI FITZHENRY

Supervised Contact allows quality time for children to build and maintain relationships with family members from whom they are separated.

Our qualified supervisors ensure that time with their child/ren has positive outcomes for all participants, within the guidelines set by the New Zealand Association of Supervised Contact.

Contact is facilitated in a safe, child-focused, confidential setting with trained staff.

Most of our visits take place over the weekend; however, some clients opt for weekday visits, which we can accommodate. Many of our clients travel from outlying areas such as Auckland, Hamilton and Tauranga.

Over the reporting period, the service has facilitated an average of 31 contact visits per month, servicing a total of 33 visiting parents and 62 children throughout the year.

PAEROA TOY LIBRARY - WRITTEN BY WINSOME ANSTY

Since my report last AGM there has been little change to our situation, which is a good thing.

We continue to operate out of the building on Station Road (known as the "Old L & P factory" which has been undergoing some creative painting in bright colours that attracts attention, that has been helping new families to find us and becoming members.

Staffing is always a concern for volunteer roles in any organisation however we have retained our Chairperson, our secretary and our treasurer, lost one committee member (Hellen) in January who was unable to continue, and gained another committee member (Alexis) who helps out one shift a week and has been making a list of toys that need updating as the year progresses.

During the year our treasurer Bianca has completed her Nursing degree so that's a big congratulations from our team, and she is working at Thames hospital, we appreciate all the help she gives us.

We have once again been fortunate to obtain funding via COGS, Trust Waikato, Lotteries and Diprose Millar Community Fund (an accounting firm with a charitable arm), to cover rent and all our operational needs over the past year, plus purchasing of new toys to refresh our collection and replace some that were damaged or past their use by date and have become unsafe or missing parts etc. We also purchased a new shelf unit recently for behind our desk.

We were able to update our old laptop thanks to the Diprose Millar funding and more recently we updated our ageing printer which makes life much easier, especially for Ann our secretary.

We have sold off (very cheaply) some of the old toys that needed replacing (including those that the public donate to us from time to time that are not able to be used as hire items).

We continue to use Elaine Rattigan of EMBR Solutions Ltd to review our financial records; her help is much appreciated.

Our joining fee remains at \$30 per family or \$20 for grandparents.

Number of families: 42

Number of children: 68

Recently we have updated our MOU with the PCST regarding changes to the Charities Act.

We look forward to another year of serving our community as volunteers under the umbrella of Paeroa Community Support Trust.

PAEROA TOY LIBRARY

FINANCIAL STATEMENT

Income and Expenditure for year ending March 31, 2025		
2024		2025
\$2,497.29	Opening Balance	\$2,648.25
Income		
\$750.00	Subscriptions	\$980.00
\$1,282.50	Toys	\$1,210.00
\$105.00	Overdue Fees	\$99.00
\$88.60	Donations	\$400.10
\$291.30	Sales and Fundraising	\$803.70
\$ -	Admin	\$2.00
\$35.87	Bank	\$21.07
\$2,553.27	TOTAL	\$3,515.87
Grants		
\$567.52	Lottery Community	\$949.90
\$2,875.00	Community Organisation Grant Scheme (GOGS)	\$4,600.00
\$1,000.00	Trust Waikato	\$1,000.00
\$ -	Diprose Miller	\$1,000.00
\$4,442.52	TOTAL GRANTS	\$7,549.90
\$6,995.79	TOTAL INCOME	\$11,065.77
Expenses		
\$410.99	Toys Purchased	\$2,892.81
\$33.99	Administration	\$1,435.25
\$368.00	Toy Storage	\$ -
\$3,844.00	Rent	\$4,680.00
\$368.67	Insurance	\$411.92
\$89.30	Maintenance/Cleaning	\$555.50
\$117.53	Subscription to Toy Library Federation	\$137.45
\$203.50	Volunteer Expenses	\$509.70
\$5.00	Health & Safety	\$ -
\$1,403.85	Relocation Expenses	\$ -
\$6,844.83	TOTAL EXPENDITURE	\$10,622.63
\$150.96	Net Surplus	\$443.14
\$2,648.25	Closing Bank Balance	\$3,091.39

KEEN TEAM

- WRITTEN BY ANNETTE BUCHANAN

After Eight years Keen Team have decided to end.

We have lost a good few ladies, so it's time to finish. We have had a great time together.

Very thankful to have had the use of the church hall for fifteen minutes each Friday.

This has been a great outreach, within the community, and helped many ladies.

We all keep this as our reminder.

" If you wish to be Thinner

Diminish Your Dinner"



PAEROA VOLUNTEER DRIVERS

WRITTEN BY VAL SPARKS

Over the last year the numbers using the Volunteer Drivers' services have increased hugely, with some users having regular, frequent local trips. This has meant that all personnel involved have had their workload increased, the committee members in particular lifting the load from the office staff as much as possible; also taking after-hours calls, which often meant finding a driver at short notice. Future proofing is paramount in the purchase of a computer and phone by Volunteer Drivers

In the last twelve months there have been 744 trips (mostly return but some one way); 57,718 ~~ks~~ done; 1,665.25 hours for drivers (an average of 98 hours per driver) for 17 drivers; 1,500 Volunteer hours for administration.

We mourn the death of one of our drivers, Bill Walters, who would do a drive at a moment's notice.

Even with the addition of six new drivers there is always the need for more, so the load on volunteers does not become overwhelming.

Thanks to the Recourse Centre staff for their contribution in the running of such a worthwhile service to the community

PAEROA VOLUNTEER DRIVERS

FINANCIAL STATEMENT

Statement of Revenues and Expenses

Paeroa Volunteer Drivers

For the Year Ended 31 March 2025

		\$
Grant Income		
Ministry of Health	1,772	
Waikato DHB	12,925	
Waikato Regional Council	20,988	
	35,685	
Other Income		
ACC	50	
Koha from Patients	2,085	
Interest Received	198	
	2,333	
		38,018
Expenses		
Travel	34,693	
Telephone	669	
Training	250	
General Expenses	215	
PCST Admin fee	970	
Depreciation	487	
	37,284	
		734
Accumulated Funds		
Opening Balance 1 April 2024		15,161
Closing Balance 31 March 2025		15,895

Statement of Financial Position

Paeroa Volunteer Drivers

As at 31 March 2025

		\$
Current Assets		
Bank accounts	15,213	
Fixed Assets		
Computer Equipment	682	
Total Assets	15,895	



seppo.net

PAEROA COMMUNITY BUS - WRITTEN BY VAL SPARKS

This will be the last annual report from the bus to the Trust as it was agreed by the committee to withdraw from under the “umbrella” of the Trust.

At the end of March 2025, John Hunt resigned from driving the bus to Thames every Tuesday after faithful service for some years, he will be missed. The possibility of going only once a fortnight over the winter months is being considered after a new driver is found.

Thanks go to the regular drivers who take local folk who would not be able to do their shopping every Friday without the bus.

Thanks too, for the sponsors,
Tony Richards, Toyota
Advance Insurance Services
Lynch and Partners
Without their help the bus would not be viable.

Janet Morigan has offered her expertise in reviewing the books as from June 2024 for which we are grateful.

PAEROA NEIGHBOURS FOODBANK

- WRITTEN BY SHARON HAMILTON

This past year has seen 293 food parcels feeding 512 Adults and 280 Children as well as numerous Cats and Dogs. This is an increase on last year which saw 259 food parcels given out. This of course being a reflection of the rising cost of living. We have also helped more homeless/transient folk than we had previously as well.

The Committee has seen some changes this year as well. We sadly said goodbye to John and Colleen O'Neale after many many years of service to Foodbank, as well as the Furniture bank. I would like to acknowledge all they have done to keep the foodbank running smoothly over the years. I have very big shoes to fill. Graeme and Mary Jamieson decided to have a break as well. We are hopeful they will return though. We welcomed Zoe Cosson and Dakota Wood early this year. They are both very enthusiastic and helpful members of the team. Elaine Rattigan has taken on our Treasurer role. I am thankful for her wise guidance with all things financial. Zoe is working with Elaine on our funding as well.

We are not seeing as many donations from the community, which I feel is also a reflection of the rising costs we are all feeling. Our monthly restock of the foodbank is now in the vicinity of \$1000 per month, which is an increase of around \$200 - \$300 for a similar amount last year.

Donations can be dropped off at the Hauraki Resource Centre Mon-Fri 10am-2pm.

Non-perishable food items like Jam, Marmite, Rice, Noodles, Pasta, Toilet rolls, Pasta sauce, Baked Beans, Spaghetti, Cream style Sweetcorn, Rice and Bread to name a few.

Special thanks to Thames SPCA who provide us with cat and dog food on a regular basis.

The Committee has also done a wonderful job this year. I would like to thank you all.

	2025	2024
Trading Income		
Donations Received	6,827.00	5,889.60
Grants Received	7,000.00	2,000.00
Interest Income	203.31	254.30
Total Trading Income	14,030.31	8,143.90
Cost of Sales		
Food Purchases	9,471.58	7,731.93
Total Cost of Sales	9,471.58	7,731.93
Gross Profit	4,558.73	411.97
Operating Expenses		
Bank Fees	51.35	85.00
Cleaning	-	14.00
Entertainment - Non deductible	246.67	118.00
Motor Vehicle Expenses	-	90.00
Office Expenses	2,400.00	2,400.00
Telephone & Internet	20.00	40.00
Total Operating Expenses	2,718.02	2,747.00
Net Profit	1,840.71	(2,335.03)



**SUPPORT OUR COMMUNITY WORK
YOUR DONATION HELPS US CONTINUE OUR MAHI.
BANK: WESTPAC
ACCOUNT NAME: PAEROA COMMUNITY SUPPORT TRUST
ACCOUNT NUMBER: 03-1572-0018729-00
REFERENCE: YOUR NAME - DONATION**



TVAl youth event in Thames. We were lucky enough to be invited along to the event in Thames to listen to people positively talk to youth. Speakers included Jase Williams, Jessica Tyson (Miss World/NZ news presenter), Melodownz and most notably Hana Rawhiti. One of the students was like “Miss is that the lady that ripped up the papers and did the Haka in parliament”

**FOR MORE INFORMATION PLEASE VISIT OUR
WEBSITE - WWW.PC.ORG.NZ
OR FACEBOOK PAGE -
[HTTPS://WWW.FACEBOOK.COM/CAREHOUSE.PAEROA/](https://www.facebook.com/carehouse.paeroa/)**